



BULL624 TURBO



COMMERCIAL USE

control unit with incorporated receiver and virtual encoder
personalised release key
built-in battery charger



up to 600 kg



24 Vdc | intensive use



- Fast 24 VDC geared motor for intensive use with integrated control unit equipped with switching power supply (115/230 VAC) that permits a reduced power use and a long lifespan of the actuator
- The control unit, located on the top of the motor, facilitates wiring operations
- The virtual encoder allows proper management of the slowing-down phases, movement tracking (STC system), and torque management in relation to the position of the gate, which guarantees maximum safety
- Self-programming with the radio transmitter can be activated at the first installation. Practical cableguides
- **Maximum performance and speed (25.5 m/min with 600 kg)**
- Anti-crushing system with amperometric obstacle detection
- Safety sensor that stops the motor power supply during release operations
- Designed for the connection of the X.BE accessory in order to be integrated with KNX domotics installations and the programming through the app BeUP and the interface PRO.UP
- Operation guaranteed even in the event of a power supply failure through batteries that can be perfectly integrated in the motor
- Version available with magnetic limit switches (BULL624 TURBO.S)



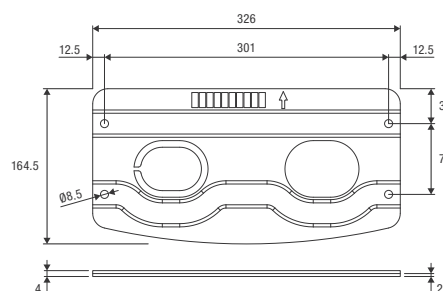
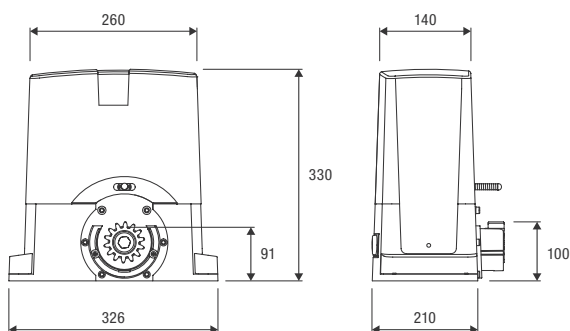
CONTROL UNITS:

BULL624 TURBO — CP.B24 TURBO

BULL624 TURBO.S — CP.B24 TURBO



Reinforced foundation plate Dima included.
Dimensions 326x164.5x2 mm, motor fixing distance 301x75 mm, 4 holes Ø 8.5 mm.



COMPLETE KITS



MOTOR



PHOTOCELLS



FLASHING LIGHT



TRANSMITTER

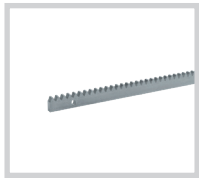
KBULL624TURBO

1x **BULL624TURBO**

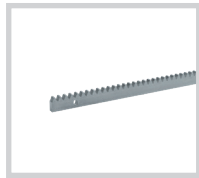
1x **PUPILLA.T**

1x **LAMPY**

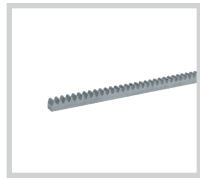
1x **TO.GO2VA**



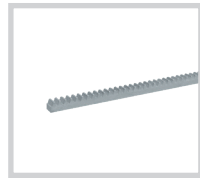
RI.M4F
M4 rack, to weld or attach with screws, 30x12x1000 mm slotted and galvanised. Supplied with M6 screws and threaded spacers.
Package of 4 pcs.



RI.M4F2
M4 rack, to weld or attach with screws, 30x12x2000 mm slotted and galvanised. Supplied with M6 screws and threaded spacers.
Package of 1 pc.



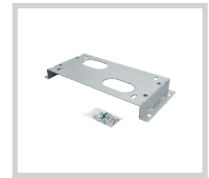
RI.M4Z
M4 galvanised rack to weld 22x22x2000 mm.
Package of 1 pc.



RI.M4ZF
Galvanised slotted M4 rack 22x22x2010 mm for fastening to the side with the teeth. Supplied with M6 screws.
Package of 1 pc.



RI.M4P
Nylon rack with steel core, to attach with screws, M4, 28x40x1000 mm. Slotted, provided with self-drilling screws.
Package of 10 pcs.



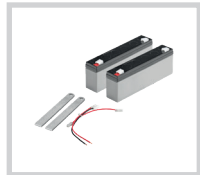
BULL.P-1
Raised foundation plate. Height 34 mm. Floor fixing distance 353x117 mm, no. 4 Ø 11 mm. External dimensions 372x167 mm.



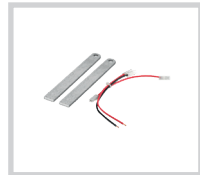
BULL.P3
Raised foundation plate. Height 34 mm. Floor fixing distance 260x117 mm, no. 4 Ø 11 mm. External dimensions 326x167 mm.



SB.BULL8.F
Externally fitted anti-intrusion cable unlock device (L=4.5m).



BT2.BAT
1.2 Ah battery kit with bracket and cable.



BULL624T.CB
Kit composed of cables and brackets for batteries installation.
Pack of 5 pieces.



SIS
Quick connection electronic board that allows synchronised movement of 2 automation devices (opposed sliding gates). One board for each motor is necessary.

AUTOMATISMI BENINCÀ SpA • Via del Capitello, 45 • 36066 Sandrigo (VI) ITALY • T +39 0444 751030 • sales@beninca.com

TECHNICAL DATA	BULL624 TURBO	BULL624 TURBO.S
Power supply	115 Vac / 230 Vac (50-60Hz)	115 Vac / 230 Vac (50-60Hz)
Motor supply	24 Vdc	24 Vdc
Max absorbed current	5 / 3 A	5 / 3 A
Max Thrust	330 N	330 N
Opening speed	12.5 ÷ 25,5 m/min	12.5 ÷ 25,5 m/min
Duty cycle	60%*	60%*
Protection level	IP44	IP44
Magnetic limit switches	NO	YES
Operating temperature	-20°C /+50°C	-20°C /+50°C
Max gate weight	600 kg	600 kg
Driving gear for rack	M4 Z18	M4 Z18
Weight	10 kg	10 kg
Items no. per pallet	40	40
Kit weight	10.6 kg	---
Kits no. per pallet	40	---

* In extreme operating conditions (environment T 50°C, speed 25.5 m/min, gate weight 600 kg) the cycle falls to 40%